

K series

ASAHI  
**PENTAX**

The new K series from Asahi Pentax

**CAMERAS  
THAT UNDERSTAND YOU**



# YOUR NEXT CAMERA: WHY IT OUGHT TO UNDERSTAND YOU



ASAHI FLEX I - 1952 ①

AP - 1957 ②

SPOTMATIC - 1964 ③

ES II - 1973 ④

PROTOTYPE ⑤

PROTOTYPE-METALICA - 1966 ⑥

PROTOTYPE ⑦

PROTOTYPE ⑧

Most camera manufacturers seem to believe that if you wish to take good photographs, the burden is on you — to learn to understand, and to master, the intricacies of their cameras.

Not so with Pentax.

In fact, Pentax engineers have long pursued the opposite goal: to produce cameras that understand you and your desire for photographic excellence.

This remarkably refreshing design philosophy can best be seen in the New K series of Pentax cameras. The K series, which includes four models — the K2, KX, KM, and K 1000 — represent the synthesis of Asahi Pentax's 25 years of 35mm SLR experience. They are cameras which are engineered not just to be new for the sake of newness, but to understand what it is you want from a camera, no matter what your degree of photographic expertise.

Consider the new Pentax K2. This could well be the most sophisticated electronic camera ever built. Yet, despite its complexity, it is almost as easy to operate as a pocket-type camera, while delivering results that no simple camera could hope to duplicate. Or the new KX, a blend of engineering and technological ingenuity unparalleled in Asahi Pentax history. Or the new Pentax KM and K 1000, cameras designed specifically for those just entering the field of fine photography.

The K series from Asahi Pentax: Cameras that understand you.

Asahi Pentax: 5,000,000 cameras later,

still the innovator in 35mm SLR photography.

Asahi Optical Co., better known as Asahi Pentax, has been creating superb cameras since 1951, when the company introduced Asahiflex I, Japan's first 35mm SLR camera.

In 1954, Asahi Pentax stunned the photographic world by announcing the first instant-return mirror.

In 1957, they introduced the first camera to bear the Pentax name. It was called the Asahi Pentax and included, for the first time, an eye-level pentaprism finder.

In 1960, the maker of Pentax cameras pioneered the first 35mm SLR camera to have through-the-lens metering.

In 1971, they announced the world's first Super-Multi-Coated line of lenses, and the creation of the world's first fully automatic electronic shutter with patented memory circuit.

At that time, it was thought that Pentax had developed the ultimate camera for producing exceptional photographs in the easiest possible manner.

But time is a great teacher.

And everything that Asahi Optical Co. has learned in its 25 years of design and manufacturing experience has now been incorporated into the new K series of Pentax cameras.

They are more compact, easier to use and even more versatile.

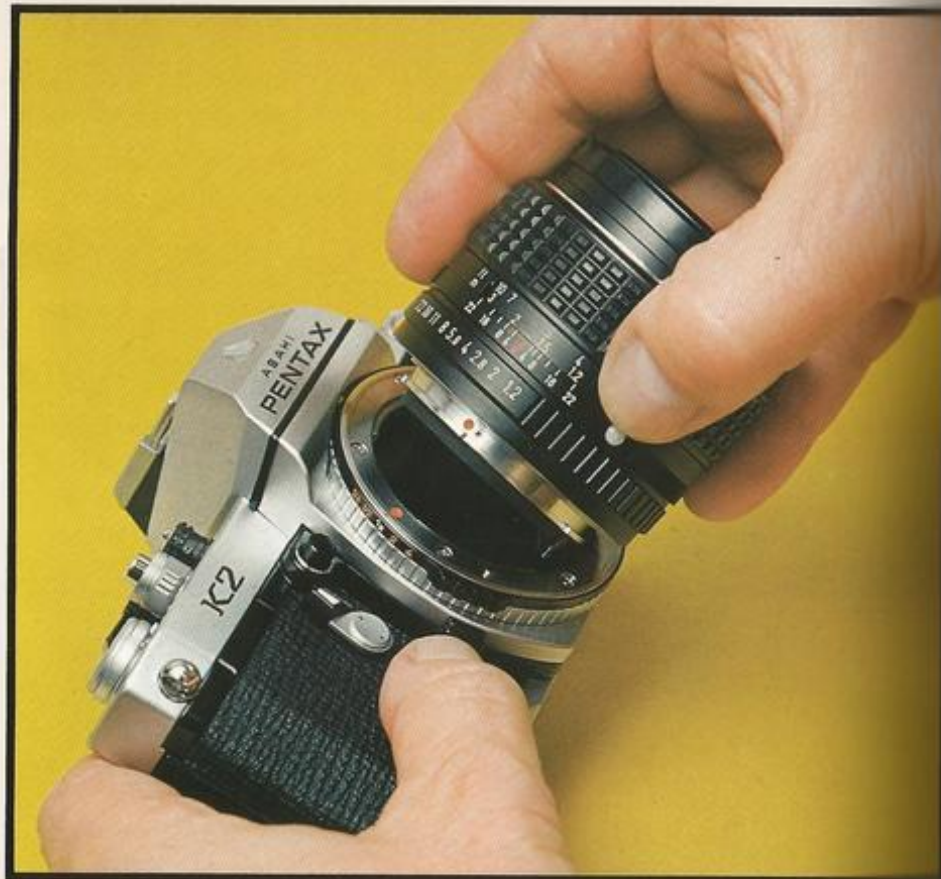
Even the famous Pentax "feel" has been improved.

A new generation of cameras has been

born.

Handle one, and you'll never want to part with it.

# ALL THE FEATURES YOU WANT IN YOUR NEXT CAMERA



• Functions	• Beveled edge • Focal plane shutter	• X synchronization	• Fully automatic exposure • Through-the-lens exposure metering	• Meter switch
<b>K2</b>	• 5-BLADED (METAL)	1/125	• NEEDLE-MATCHING CENTER WEIGHTED	SHUTTER BUTTON & FILM ADVANCE LEVER
<b>KX</b>	• RUBBERIZED SILK CURTAIN	1/60	• NEEDLE-MATCHING CENTER WEIGHTED	SHUTTER BUTTON & FILM ADVANCE LEVER
<b>KM</b>	• RUBBERIZED SILK CURTAIN	1/60	• NEEDLE-CENTERING FULL-FRAME AVERAGING	PHOTOSWITCH
<b>K1000</b>	• RUBBERIZED SILK CURTAIN	1/60	• NEEDLE-CENTERING FULL-FRAME AVERAGING	PHOTOSWITCH

Although the Pentax K2, KX, KM and K1000 are distinctly different cameras, they do share a number of common characteristics. All four of these cameras have been "human engineered," a design concept which recognizes the fact that since humans cannot be adapted to fit cameras, cameras should be adapted for use by people.

While this seemingly simple concept is not easy to explain, its meaning becomes crystal clear the moment you pick up one of these cameras. All three feel astonishingly well-balanced. Each has been designed to fit your hands in such a way that the camera begins to feel as if it were a permanent fixture. All controls are located where you instinctively know they ought to be, and where you can reach them without taking the camera away from your eye. The camera itself is large enough to fit your hands comfortably, yet small enough that it never seems bulky or cumbersome.

The focusing ring on all four K cameras has been given new knurling and a new, softer rubber ring for no-slip gripping even when your fingers are moist.

A new Pentax bayonet mount locks lenses in place in less than one quarter of a turn, yet holds them there with unparalleled security. By placing your fingers on special locator nodes on the lens and camera body, you can even change lenses without looking.

A beveled edge on the bottom makes these cameras more comfortable and easier to hold.

The self-timer on the K2, KX and KM is smaller and sits relatively high on the front of the body, conveniently out of your way during normal shooting.

A new plastic thumbguard makes the film advance lever even more comfortable.

And special new flash terminals will accept screw-in cords to hold your electronic flash more securely and to prevent flash failure.

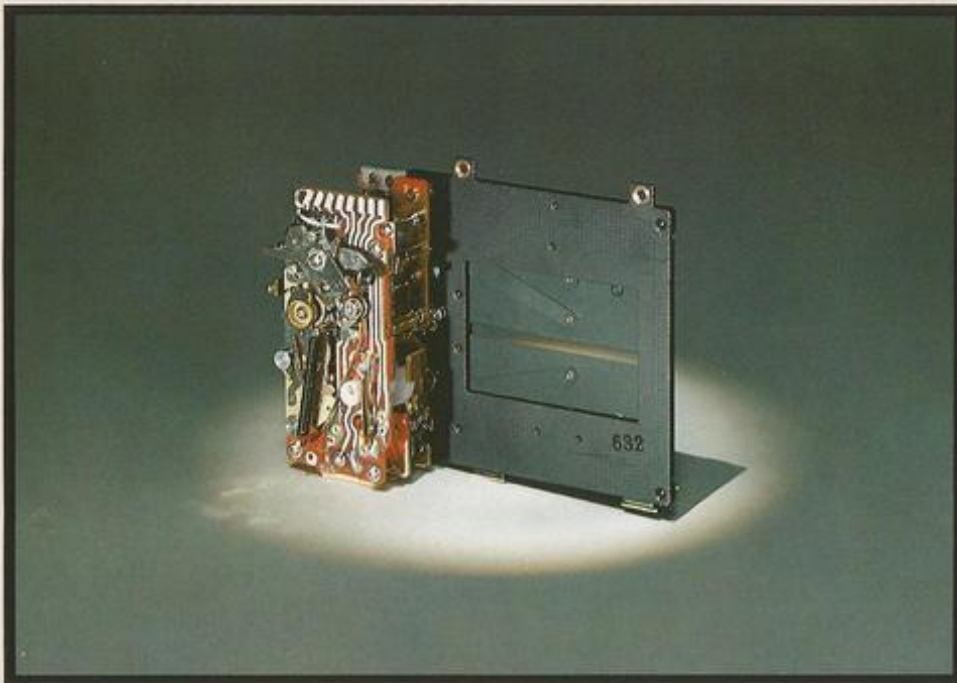
The K series of Pentax cameras: engineered to fit you as well as to understand you.

	● Shutter speeds	● Photo sensing element	● ASA speed index	● Batteries	● Battery check mechanism	● Pentaprism	● Swing-up-and-back mirror	● f number indication in viewfinder	● Mirror lock-up device	● Memo holder	● Shutter button lock	● Black body	● Motor Drive/Data Camera	● Self-timer	● Hot shoe	● Depth-of-field preview
1/1000 8 sec.	SILICON PHOTO DIODE	8 - 6400	TWO 1.5V SILVER OXIDE	LIGHT-EMITTING DIODE	SILVER COATING	●	●	●	●	●	●	●	●	●	●	●
1/1000 1 sec.	SILICON PHOTO DIODE	8 - 6400	TWO 1.5V SILVER OXIDE	METER NEEDLE	SILVER COATING		●	●	●	●	●	●	●	●	●	●
1/1000 1 sec.	CADMIUM SULFIDE	20 - 3200	ONE 1.5V SILVER OXIDE	METER NEEDLE	ALUMINUM COATING						●		●	●	●	
1/1000 1 sec.	CADMIUM SULFIDE	20 - 3200	ONE 1.5V SILVER OXIDE	METER NEEDLE	ALUMINUM COATING									●		

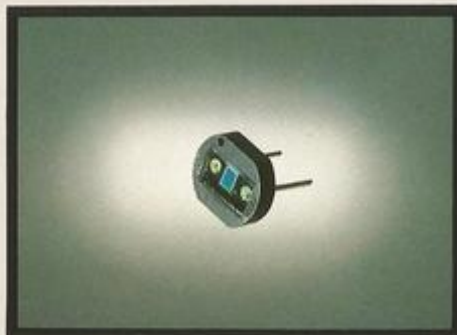
**WHEN YOU'RE READY  
FOR THE WORLD'S FINEST  
ELECTRONIC CAMERA:  
THE INCREDIBLE PENTAX K2**





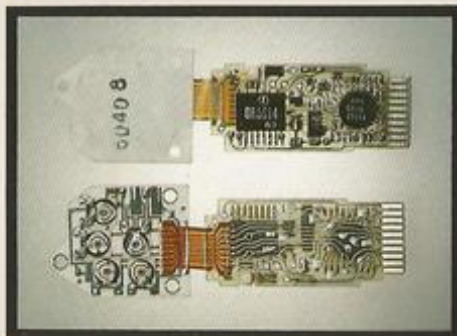


● Vertical-run, metal focal-plane shutter



● Silicon photo diode

● IC patterns



Up until now, electronic shutter cameras have been bulkier than their manual cousins.

But not any more.

In the new K2, Pentax engineers have succeeded in creating an electronic camera that is actually smaller and more compact than many conventional cameras.

Whether fully automatic or manual, the choice is yours.

While some photographers enjoy the simplicity of a fully-automatic camera, others still prefer to select the shutter speed for themselves.

Since there is some merit to both points of view, Pentax designers have artfully created, in the K2, an electronic camera that can be used either way.

In its automatic mode, the K2 electronically selects the shutter speed for you, from a stepless range of 1/1000 to 8 sec. So if the amount of light available to you requires a shutter speed of 1/555 sec., the K2 automatically delivers a shutter speed of 1/555 sec.

On the other hand, if you wish to select the shutter speed for yourself, the K2 gives you a choice of 14 speeds — 1/1000 to 8 sec. — and center-weighted, match-needle metering to make sure you get the proper exposure.

Or, if you wish to enjoy the best of both worlds, you may program the K2 to deliver more or less than the normal exposure — while in the automatic mode — to achieve special effects, or to correct for unique lighting conditions with the



built-in  $\pm 2$  EV exposure compensation control.

The K2's unique 10-bladed metal shutter delivers a lightning-like flash sync of 1/125 sec.

The primary reason why most electronic cameras are larger than manual cameras is because the camera body has to be increased in size to accommodate the electronic shutter and its circuitry.

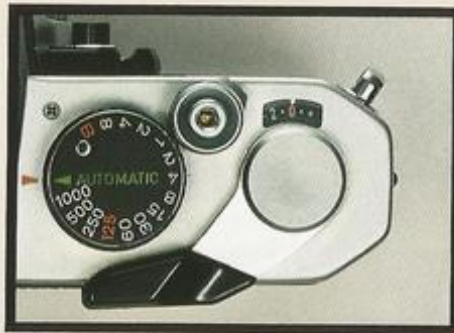
But when the engineers of Asahi Pentax set out to design the K2, they started with the opposite idea: that the shutter should be made to fit the camera body.

The result of this thinking is an entirely new kind of shutter developed in conjunction with the world-famous watchmaking firm of Seiko. This MF (Metal Focal-plane) shutter consists of ten metal leaves which open vertically, with a fanlike movement. This not only permits a smaller, more compact body, but because the vertical dimension of the 35mm format is less than the horizontal, it also allows the K2 to be set as fast as 1/125 sec. for electronic flash synchronization. Your next camera ought to react as fast as you do.

Rapidly changing light conditions have always been a problem for cameras with built-in light meters.

But not any more.

The revolutionary Pentax K2 eliminates this problem with a pair of silicon photo diodes that measure light accurately and almost instantaneously, even in dimly-lit situations.



So even if you have the reactions of a Grand Prix driver, you can't react faster than this camera, an improvement that works to help you achieve the kind of incomparable photographs you may have only dreamt about in the past.

Other important features.

In addition to those cited above, the superb Pentax K2 also offers a number of other important features.

It has a remarkable new meter activation system which can be switched on by moving the film advance lever 25 degrees to the right and depressing the shutter release button halfway.

The mirror locks up to allow long exposures with virtually no vibration.

It has a new silver-coated pentaprism that delivers brighter viewing even in dimly-lit situations, along with a new viewfinder that allows you to view your subject more accurately than ever before.

And it has a light emitting diode (LED) that lights up at the touch of a button to indicate sufficient battery strength.

The Asahi Pentax K2: it redefines the meaning of the term automatic camera to encompass something more than just a camera with an electronic shutter.



- When shooting on **AUTOMATIC**, the blue needle indicates **AUTO** on top. When the meter is switched on, the black needle indicates a correct shutter speed.



- When shooting on **manual**, the blue needle indicates the shutter speed chosen. To obtain optimum exposure, match the black needle with the blue one by turning either the aperture ring or the shutter speed dial.

**Type** 35mm SLR with through-the-lens exposure meter and vertically moving electronic focal-plane shutter.  
Exposure control fully-automatic or manual.

**Film and Negative Size** 35mm film. 24mm x 36mm.

**Standard Lenses** SMC Pentax 50mm f/1.2, 50mm f/1.4 and 55mm f/1.8 with fully-automatic diaphragm.  
Minimum aperture: f/22. Filter size: 52mm. Minimum focusing distance: 45cm (1.5ft.)

**Shutter** Vertical run, metal focal-plane shutter. Shutter button lock provided. Automatic electronic shutter: stepless between 8 and 1/1000 sec. Manual electronic shutter: 8, 4, 2, 1, 1/2, 1/4, 1/8, 1/15, 1/30, 1/60, 1/125, 1/250, 1/500, 1/1000 sec. Manual mechanical shutter: B, 1/125 and 1/1000 sec. (when battery is dead.)

**Flash Synchronization** X contact hot shoe for cordless flash connection. FP + X contacts for conventional flash cord connection. X synchronization at 1/125 sec.

**Self-timer** Built-in self-timer with interrupt function.  
5 - 9 sec. delay after tripping shutter release.

**Viewfinder** Silver coated pentaprism finder with cross-microprism or split-image focusing screen. 0.88x magnification with 50mm lenses (life-size with 55mm lens). 95% field of view. Dioptry -0.8. "Incorrect exposure range" indicator.

**Focusing** Microprism and split-image screens standard plus customs screens.

**Reflex Mirror** Swing-up-and-back, instant-return type, with mirror lock-up lever, and special shock absorbers for minimum vibration.

**Film Advance** Single-stroke wind lever. 130° throw and 25° play.

**Exposure Counter** Automatic reset.

**Film Rewind** Rapid-rewind crank lifts clear of body.

**Lens Mount** Pentax bayonet mount. Rotation: 65°.

**Exposure Meter** Silicon-Photo-Diode-activated, aperture-preferred meter measures the entire area of ground glass with emphasis on central portion at full lens aperture. Match-needle operation for correct exposure on manual. Couples directly to shutter, aperture and film speed settings. Shutter speed and auto/manual setting visible in viewfinder for exposure double check.

**Exposure Control** Exposure factor control dial: 4x, 2x 1x, 1/2x, 1/4 for exposure compensation control.

**Power Source** Two 1.5V silver oxide batteries (Eveready S76E or Mallory MS76H).

**Meter Switch** Meter is ON when shutter button is depressed halfway. Also, when film wind lever is pulled out 25° and shutter button is depressed halfway, meter stays ON. Battery check button and lamp provided.

**Dimensions** With 50mm f/1.4 lens: width 144mm (5.7") x height 92mm (3.6") x depth 94mm (3.7").

**Weight** 946g (33.7 ozs.) with 50mm f/1.4 lens.  
680g (24.2 ozs.) without lens.

## K2 SPECIFICATIONS

# WHEN YOU'RE READY FOR A CAMERA WHOSE VIEWFINDER TELLS ALL: THE ASAHI PENTAX KX



There are any number of fine 35mm SLR cameras that offer some combination of useful features and good performance. But there is no other camera in the world that offers the same extraordinary combination of features, performance and price that is yours when you choose the new Pentax KX.

- For the KX is the most sophisticated 35mm SLR manual camera ever designed.

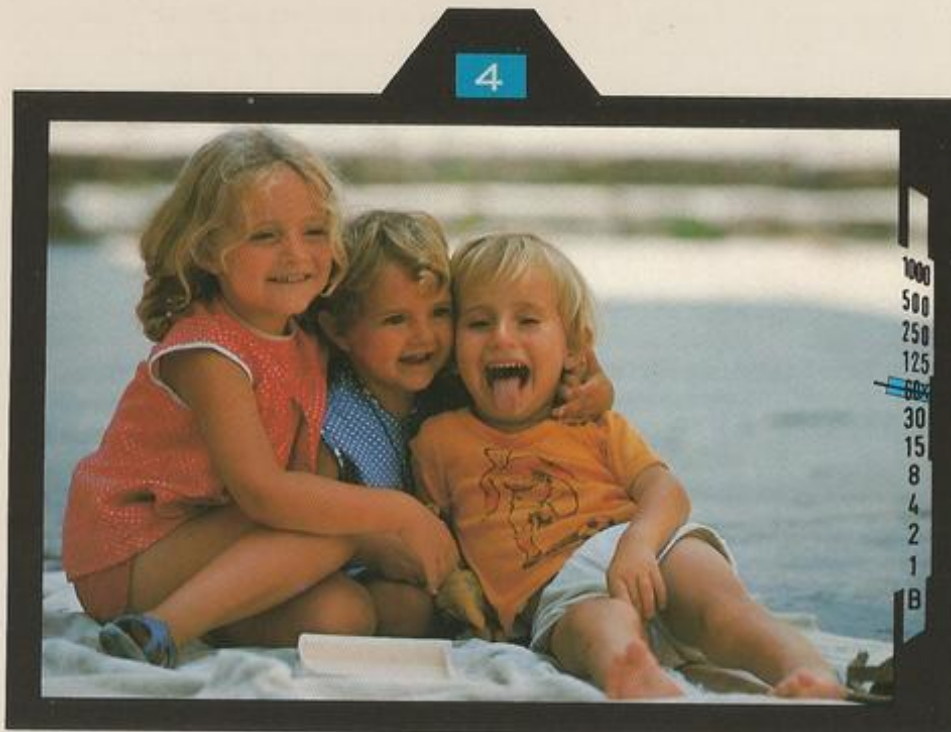
- **Information-packed viewfinder.**

To begin with, the new Pentax KX has a singularly unique viewfinder, with a large shutter speed scale on its right-hand side. Appearing along this scale is the exposure meter indicator needle, while a thicker transparent blue needle indicates the preselected shutter speed. To achieve correct exposure, all that's necessary is for you to align these two needles by rotating either the aperture ring or the shutter speed dial.

But the KX's viewfinder doesn't just display shutter speeds.

At the top of the viewfinder, it also shows you your f/stop as it actually appears on the aperture ring — thanks to an ingenious, new mini-prism. What this means is that once you begin shooting, there's never a reason to take the KX away from your eye.

Since Pentax engineers felt that your camera should be able to react as quickly as you can react, they have equipped the KX with a new light-sensing system built

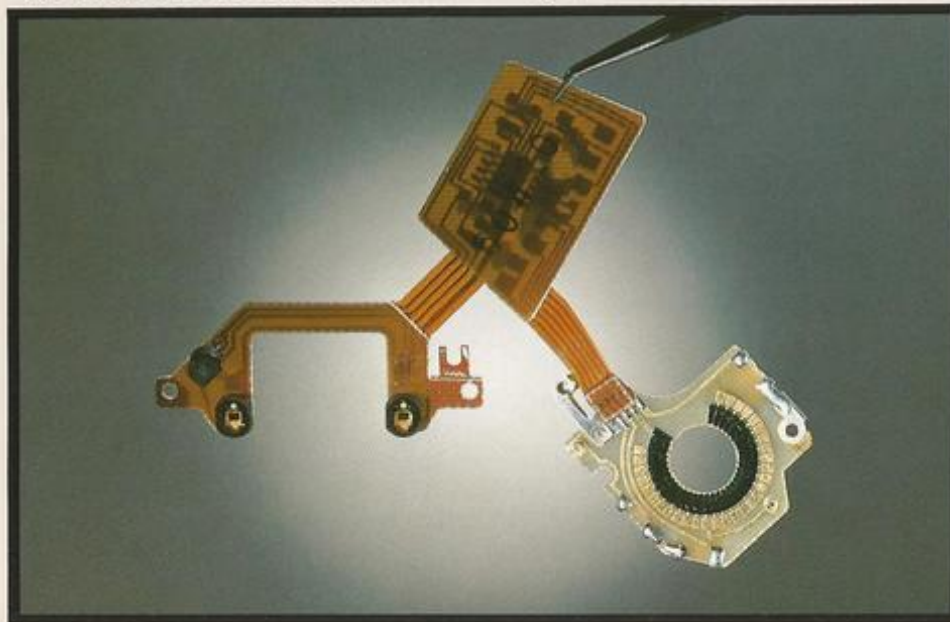


around silicon photo diodes. These extremely sensitive cells respond instantaneously to changing light conditions, and are quick to provide accurate light measurement even in very dim shooting situations. So when you're shooting with the KX, it's ready to respond as soon as you are.

No matter how quickly you're ready.



• A key feature of the KX: the through-the-lens metering circuit is coupled via a flexible circuit to two Silicon Photo Diodes and the capacitor of an Integrated Circuit.



• **Double meter activating switch.**

Also unique is the new exposure meter activating system. Now, the exposure meter is electrically coupled to both the camera's film advance lever and its shutter release button. Which means that when you move the film advance lever to take your next picture and depress the shutter release button about halfway, the exposure meter is on and operating. Moreover, the meter remains on even after releasing button. To switch the meter off, you simply return the film advance lever to its closed position.

Could anything be simpler?

• **And this isn't half the story.**

When it comes to other important features, you'll be pleased to know that Pentax designers have not stinted in this area, either. For example, the new KX has the highly-reputed Pentax focal-plane shutter with speeds ranging from B, 1 second to super-swift 1/1000 second.

It has an extended ASA range of 8 to 6400, enabling you to utilize ultra slow films as well as "push" high-speed films to their limits.

It has a depth-of-field preview button, a new silver-coated pentaprism which delivers brighter viewing than previous Pentax models, an improved self-timer with interrupt function, and a mirror lock-up system.

And although the new Asahi Pentax KX is the most sophisticated manual camera ever developed, it's never complicated to use.

# KX

## SPECIFICATIONS

<b>Type</b>	35mm SLR with built-in through-the-lens exposure meter.
<b>Film and Negative Size</b>	35mm film. 24mm x 36mm.
<b>Standard Lenses</b>	SMC Pentax 50mm f/1.2, 50mm f/1.4 and 55mm f/1.8 with fully-automatic diaphragm. Filter size: 52mm. Minimum aperture: f/22. Minimum focusing distance: 45cm (1.5ft.)
<b>Shutter</b>	Horizontal run, focal-plane shutter of rubberized silk focal plane shutter. Speeds: B, 1 - 1/1000 sec. Shutter button lock provided.
<b>Self-timer</b>	Built-in self-timer with interrupt function. Releases shutter in 5 - 13 sec.
<b>Viewfinder</b>	Silver coated pentaprism finder with cross-microprism or split-image focusing screen. Aperture setting on lens visible in viewfinder. Shutter speed setting indicated by blue needle. 0.88x magnification with 50mm lenses (life-size with 55mm lens). Dioptre -0.8. 93% field of view.
<b>Focusing</b>	Microprism and split-image screens standard plus custom screens.
<b>Reflex Mirror</b>	Instant-return type with mirror lock-up provision.
<b>Lens Mount</b>	Pentax bayonet mount.
<b>Film Advance</b>	Ratchet-type rapid-wind lever. 160° throw and 20° play. "Cocked" indicator alongside shutter release button.
<b>Exposure Counter</b>	Automatic reset.
<b>Film Rewind</b>	Rapid-rewind crank for speedy film take-up.
<b>Flash Synchronization</b>	X contact hot shoe for cordless flash connection. FP + X contacts for conventional flash cord connection. X synchronization at 1/60 sec.
<b>Exposure Meter</b>	Silicon-Photo-Diode meter measures the entire area of ground glass with emphasis on central portion at full aperture. Couples directly to shutter, aperture and film speed settings. Match-needle method. EV1 - 18 with ASA 100 film and 50mm lens. Film speed from 8 to 6400 ASA. Powered by two 1.5V silver oxide batteries.
<b>Memo Holder</b>	Square metal sleeve for holding type/speed tab from top of film box.
<b>Dimensions</b>	With 50mm f/1.4 lens: width 143mm (5.6") x height 91.4mm (3.6") x depth 94mm (3.7").
<b>Weight</b>	896g (31.4 ozs.) with 50mm f/1.4 lens. 631g (22.1 ozs.) without lens.

# WHEN YOU'RE READY FOR AN ADVANCED VERSION OF THE WORLD'S MOST POPULAR 35mm SLR: THE ASAHI PENTAX KM





The Pentax Spotmatic series of cameras have long been the world's most popular. But then, Asahi Optical Co. has never been content to rest on its laurels, even with a proven success.

Hence, the new Pentax KM, a camera which is a bayonet-mount version of the classic Spotmatic, and that has been improved in several other ways as well.

● **How the KM lets you concentrate on composition.**

Since the primary reason you buy a 35mm SLR camera is to take better photographs, Pentax has long believed that a fine camera should handle most of the "mechanics" for you, leaving you free to concentrate on composition and creativity.

And nowhere will you find a better expression of this philosophy than in the new Pentax KM.

For example, with the KM, incoming light is measured on a full-frame, averaging basis, using the entire ground glass area at full aperture. This makes it easier for you to compose in the viewfinder and yields consistently better results.

And all you have to do to obtain correct exposures with this camera is center the exposure needle between the two brackets visible in the viewfinder.

● **A poolproof photoswitch system.**

There is probably nothing more irritating in 35mm photography than to be faced with the opportunity for a once-in-a-lifetime photograph, only to find that

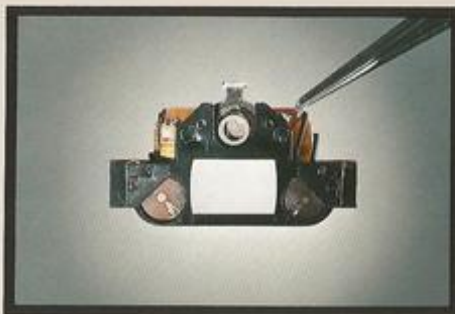
you've forgotten to turn on your camera's exposure meter switch.

Fortunately, this can never happen with the new Pentax KM.

Because instead of relying on you to remember to turn the light meter on, this camera turns it on for you. Automatically. The moment you remove the lens cap.

A small feature? Perhaps. But it's one that can help you capture a moment that otherwise might have been lost forever.

And that's a very big difference.



● Two CdS cells incorporated for activating the exposure meter, and an extra CdS for Photoswitch on top.



• **The Asahi Pentax KM:** it gives you all the features you need to get started in fine photography.

While the new Pentax KM may be next to the least expensive of our new K series, it is by no stretch of the imagination a stripped-down camera.

Instead, it includes all the features you need for fine photography.

It has a wide ASA range of 20–3200. And it delivers shutter speeds of B, 1 to 1/1000 sec.

It has an ingenious new self-timer that automatically releases the shutter in anywhere from five to 13 seconds.

Furthermore, your subject's zone-of-sharpness can instantly be checked by a mere touch of the depth-of-field preview

button.

And the KM has a slim, elegant-looking new body design, which makes it easier and even more comfortable to hold than before.

The new Pentax KM: the perfect way to get into fine, 35mm SLR photography.

# KM

## SPECIFICATIONS

<b>Type</b>	35mm SLR with built-in through-the-lens exposure meter.
<b>Film and Negative Size</b>	35mm film. 24mm x 36mm.
<b>Standard Lenses</b>	SMC Pentax 50mm f/1.2, 50mm f/1.4 and 55mm f/1.8 with fully-automatic diaphragm. Filter size: 52mm. Minimum focusing distance: 45cm. (1.5 ft.)
<b>Shutter</b>	Rubberized silk focal plane shutter. Speeds: B, 1 to 1/1000 sec.
<b>Self-timer</b>	Built-in self-timer with interrupt function. Releases shutter in 5 - 13 sec.
<b>Viewfinder</b>	Pentaprism finder with cross-microprism or split-image focusing screen. 0.87x magnification with 50mm lenses (life-size with 55mm lens). Dioptery -1.0.
<b>Reflex Mirror</b>	Instant-return type with special shock absorbers for minimum vibration.
<b>Lens Mount</b>	Pentax bayonet mount.
<b>Film Advance</b>	Ratchet-type rapid-wind lever. 160° throw and 10° play. "Cocked" indicator alongside shutter release button.
<b>Exposure Counter</b>	Automatic reset.
<b>Film Rewind</b>	Rapid-rewind crank for speedy film take-up.
<b>Flash Synchronization</b>	X contact hot shoe for cordless flash connection. FP + X contacts for conventional flash cord connection. X synchronization at 1/60 sec.
<b>Exposure Meter</b>	CdS meter measures the average brightness of the ground glass at full aperture, and couples directly to aperture, shutter and film speed settings. Zero-method exposure control. Film speed from 20 to 3200 ASA. EV 3 - 18 with ASA 100 film and 50mm lens. Powered with one 1.5V silver oxide battery. Built-in photoswitch.
<b>Loaded Film Indicator</b>	Reminder dial below film rewind knob, with settings for 20 or 36 (exposures), for ☼ daylight or ⚡ tungsten color, or ☐ black and white film.
<b>Dimensions</b>	With 50mm f/1.4 lens: width 143mm (5.6") x height 91.4mm (3.6") x depth 94mm (3.7").
<b>Weight</b>	887g (31 ozs.) with 50mm f/1.4 lens. 622g (21.8 ozs.) without lens.

**WHEN YOU'RE READY FOR A CAMERA OF  
ELEGANT SIMPLICITY,  
BUT WITH JUST ENOUGH FEATURES  
FOR YOUR OWN NEEDS: THE PENTAX K 1000**



● **The ideal introduction to the world of Pentax K Photography**

As the K Series model entailing the smallest investment, the K 1000 represents the ideal way of getting acquainted with Pentax photography. Proudly bearing the Pentax name, it retains all the essential features of a quality camera.

● **System camera**

Sharing the same mount as the other members of the K family, the K 1000 can use any one of the superb SMC Pentax lenses and accessories available. It comes with a fast f/2 55mm lens which makes it possible to shoot brightly-lit interiors and city streets at night without flash. And for those occasions when desiring to use an electronic flash unit, there is a "hot shoe" for cordless operation as well as an X-sync terminal for use with cords.

● **Correct exposure assured**

Simply removing the lens cap automatically turns on the highly accurate metering system which can be instantly adjusted for correct exposure by merely aligning the indicator needle between the two brackets visible in the viewfinder. Focusing, composing, and viewing are simplified by the large, bright focusing screen of the K 1000.

And since all exposure adjustments are made at full aperture, the viewfinder never grows dark.

● **Renowned Pentax shutter**

The K 1000 employs a rubberized silk focal plane shutter developed by Pentax

for optimum durability and accuracy. A complete shutter speed range is provided, from a brief 1/1000 sec. to "freeze action" to a long 1 sec. for dimly-lit scenes.

● **Handling ease**

Both the elimination of mirror vibration by the shock absorbers incorporated into the camera body and the texturized body surface of the K 1000 assist the photographer in holding the camera rock-steady. A large, upraised red alignment dot appears on each SMC Pentax lens for instant matching of body and lens, and a slight twist securely locks the lens into place; attaching lenses was never easier.

● **Features galore**

Whether you are using a slow reversal film or "pushing" fast film to its limit, the K 1000 can handle it, for it has an extensive ASA range of 20-3200. Moreover, when the film is transported, the "Shutter-Cocked Indicator" automatically turns red warning the photographer not to depress the shutter release button unless intending to take a picture. And, of course, each time the film is transported, the exposure counter advances one notch informing the user of the number of exposures already taken. Upon opening the camera back, the exposure counter automatically returns to the "start" position.





● **Pentax quality**

By selecting a Pentax K 1000, one is assured of receiving a camera made to the highest possible standards. Space-age technology made possible the unique Super-Multi-Coating and computer-generated optical designs of SMC Pentax lenses which are capable of discerning the finest of details.

The consistently reliable shutter and built-in exposure meter of the K 1000 guarantees correct exposure so that none

of the intrinsic quality of SMC Pentax lenses is lost in the negative or slide, resulting in photographs of unprecedented clarity, sharpness, contrast, and color rendition. Needless to add, the Pentax K 1000 offers impeccable mechanical performance as well. Both the robust lenses and rugged camera body boast of durability, in addition to precision controls, for years of trouble-free use. The Pentax K 1000: The ideal way to get acquainted with the Pentax Way.

# K1000

## SPECIFICATIONS

<b>Type</b>	35mm SLR with built-in through-the-lens exposure meter.
<b>Film and Negative Size</b>	35mm film. 24mm x 36mm.
<b>Standard Lens</b>	SMC Pentax 55mm f/2 with fully-automatic diaphragm. Filter size: 52mm. Minimum focusing distance: 45cm. (1.5 ft.)
<b>Shutter</b>	Rubberized silk focal plane shutter. Speeds: B, 1 to 1/1000 sec.
<b>Viewfinder</b>	Pentaprism finder with cross-microprism. Magnification of life-size with 55mm standard lens focused at infinity. Dioptry -1.0.
<b>Reflex Mirror</b>	Instant-return type with special shock absorbers for minimum vibration.
<b>Lens Mount</b>	Pentax bayonet mount.
<b>Film Advance</b>	Ratchet-type rapid-wind lever. 160° throw and 10° play. "Cocked" indicator alongside shutter release button.
<b>Exposure Counter</b>	Automatic reset.
<b>Film Rewind</b>	Rapid-rewind crank for speedy film take-up.
<b>Flash Synchronization</b>	X contact hot shoe for cordless flash connection. X synchronization at 1/60 sec.
<b>Exposure Meter</b>	CdS meter measures the average brightness of the ground glass at full aperture, and couples directly to aperture, shutter and film speed settings. Zero-method exposure control. Film speed from 20 to 3200 ASA. EV 3 - 18 with ASA 100 film. Powered with one 1.5V silver oxide battery. Built-in photoswitch.
<b>Dimensions</b>	With 55mm f/2 lens: width 143mm (5.6") x height 91.4mm (3.6") x depth 91mm (3.6").
<b>Weight</b>	837g (29.3 ozs.) with 55mm f/2 lens. 610g (21.4 ozs.) without lens.

# SMC PENTAX LENSES: IMPROVED TO DO AN EVEN BETTER JOB OF TAMING FLARE AND GLARE





In 1971, Pentax engineers pioneered a revolutionary new technique for the treatment of photographic lenses that all but eliminated flare and ghost images. Called Super-Multi-Coating, this process involves the application of seven separate chemical coatings to lens surfaces, helping direct more light — and astonishing 99.8% to be exact — straight through each coated surface of the lens. Now, five years later, several other camera manufacturers also offer multi-coated lenses.

But once again, to the consternation of these manufacturers, Asahi Optical Co. has moved on to something better: improved Super-Multi-Coating.

In improved Super-Multi-Coating, the full range of seven layers is applied to most glass surfaces within the lens, including some surfaces which had been merely single-coated in the past — Super-Multi-Coating is applied even to those glass surfaces which are cemented together. Thus, with new SMC Pentax lenses, even the slightest of reflections are minimized. The pictures you get are breathtakingly sharp. Color rendition is unsurpassed. More detail is retained. And contrast is simply staggering.

The world's first 50mm f/1.2 lens for an SLR camera.

For over 20 years, the Asahi Pentax screw-mount lens system has been recognized as a standard around the world.

But Pentax designers began to seek even



greater versatility.

The result of this thinking is the exceptional new Pentax bayonet-mount, a mounting system that offers fast interchangeability, efficient automatic diaphragm interlocking, an amazingly high degree of stability and precision . . . and the ability to handle large aperture lenses.

Because this new system will accommodate large apertures, Pentax now offers the world's fastest 50mm SLR lens — the remarkable new 50mm f/1.2 SMC Pentax lens.

Computer-designed for maximum performance, this lens has a short focal length for more compact size. It is composed of seven elements arranged in six groups, and offers a minimum aperture of f/22.

Super-Multi-Coated Pentax lenses: as optically perfect as you're likely to see for years to come.



# SMC PENTAX LENS SPECIFICATIONS

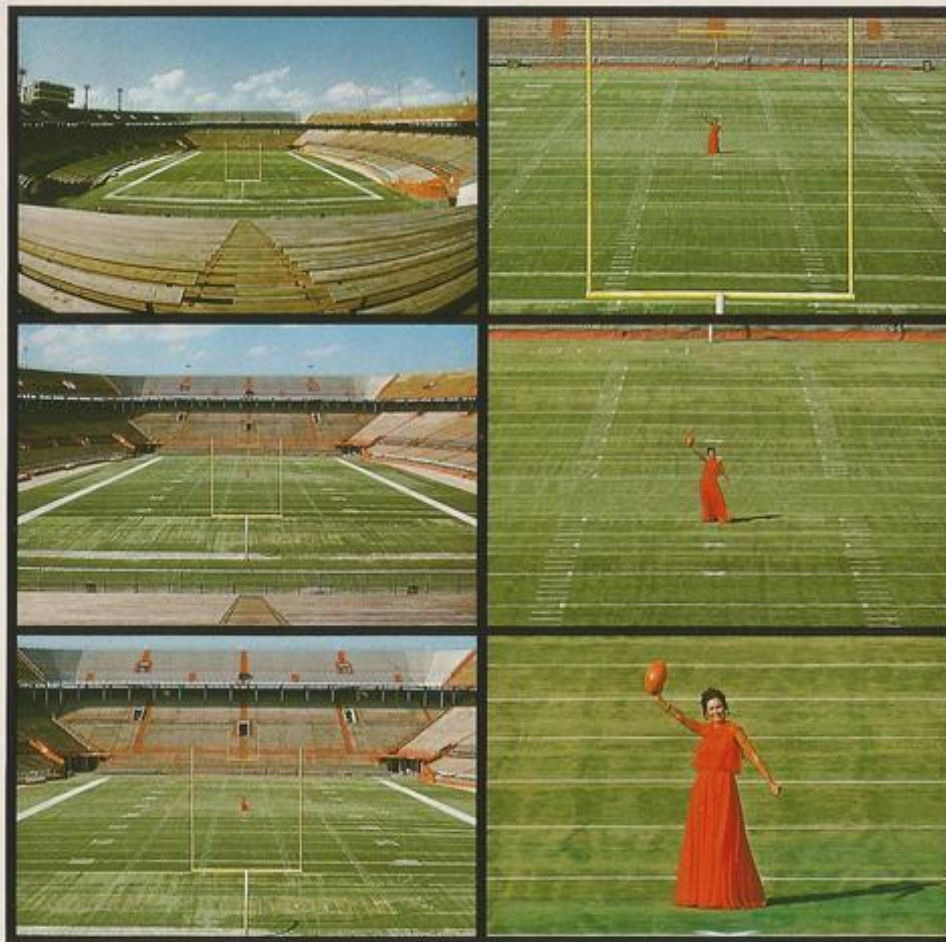
The new family of SMC Pentax lenses isn't just versatile.

It's also very complete.

In fact, it includes, as you can see from the chart on the right, a choice of 30 different lenses.

Four of these are the standard lenses: the incredible 50mm f/1.2, the hardworking 50mm f/1.4, the popular 55mm f/1.8 and the versatile 55mm f/2. Each of these offers a minimum aperture of f/22, has a fully automatic diaphragm, and a minimum focusing distance of 45cm.

The remaining 26 SMC Pentax lenses fall into seven distinctly different categories: fish-eye; ultra wide-angle; wide-angle; telephoto; ultra telephoto; zoom; and macro. The comparison photos shown at the right illustrate the kind of effects you can obtain by using five of these lenses (fish-eye, wide-angle, telephoto and ultra telephoto) as compared to a standard SMC Pentax 50mm lens. For more specifics on any of these lenses, please feel free to consult with your Pentax dealer.



17mm	135mm
28mm	300mm
50mm	1000mm

● Type	● Name of Lens	● Focal Length & Maximum Aperture	● Minimum Aperture	● Lens Construction (groups—elements)	● Diaphragm		● Minimum Focusing Distance	● Angle of View (degrees)	● Maximum Diameter & Length (mm x mm)	● Weight		● Filter Size (mm)
					● m	● ft.				● g	● ozs.	
<b>Fish-eye</b>	● SMC Pentax Fish-Eye	17mm f/4	22	7-11	FA	0.2	0.66	180	64.5×34	234	8.19	BI
<b>Super-wide-angle</b>	● SMC Pentax	15mm f/3.5	22	12-13	FA	0.3	1.0	111	80×81.5	550	19.25	BI
	● SMC Pentax	20mm f/4	22	10-12	FA	0.25	0.8	94	63×57	300	10.5	58
	● SMC Pentax	24mm f/3.5	22	8-9	FA	0.25	0.8	84	63×46.5	248	8.68	58
	● SMC Pentax	28mm f/2	22	8-9	FA	0.3	1.0	75	62.5×69	423	14.81	52
<b>Wide-angle</b>	● SMC Pentax	28mm f/3.5	22	7-8	FA	0.3	1.0	75	63×47	261	9.14	52
	● SMC Pentax Shift	28mm f/3.5	22	11-12	M	0.3	1.0	75	80×92.5	611	21.39	BI
	● SMC Pentax	35mm f/2	22	7-8	FA	0.35	1.2	62	63×56	283	9.9	52
	● SMC Pentax	35mm f/3.5	22	4-5	FA	0.35	1.2	62	63×35.5	161	5.64	52
<b>Standard</b>	● SMC Pentax	50mm f/1.2	22	6-7	FA	0.45	1.5	46	65×48.5	385	13.48	52
	● SMC Pentax	50mm f/1.4	22	6-7	FA	0.45	1.5	46	63×41.5	265	9.28	52
	● SMC Pentax	55mm f/1.8	22	5-6	FA	0.45	1.5	43	63×39	221	7.74	52
	● SMC Pentax	55mm f/2	22	5-6	FA	0.45	1.5	43	63×39	227	7.95	52
<b>Telephoto</b>	● SMC Pentax	85mm f/1.8	22	6-6	FA	0.85	2.75	29	64×56	331	11.59	52
	● SMC Pentax	105mm f/2.8	32	4-5	FA	1.2	4	23	62.5×63	294	10.29	52
	● SMC Pentax	120mm f/2.8	32	4-5	FA	1.2	4	21	62.5×74.5	355	12.43	52
	● SMC Pentax	135mm f/2.5	32	6-6	FA	1.5	5	18	67.5×85.9	470	16.45	58
	● SMC Pentax	135mm f/3.5	32	4-4	FA	1.5	5	18	62.5×87.5	325	11.38	52
	● SMC Pentax	150mm f/4	32	5-5	FA	1.8	6	17	62.5×96	338	11.83	52
<b>Super-telephoto</b>	● SMC Pentax	200mm f/4	32	5-5	FA	2	6.5	12	65×137	516	18.06	58
	● SMC Pentax	300mm f/4	32	5-7	FA	4	13	8	85×188	942	32.97	77
	● SMC Pentax	400mm f/5.6	45	5-5	M	8	27	6	85×277	1240	43.4	77
	● SMC Pentax	500mm f/4.5	45	4-4	M	10	35	5	126.5×440	3330	116.6	52
	● SMC Pentax	1000mm f/8	45	5-5	M	30	100	2.5	143×738	5250	183.8	52
<b>Zoom</b>	● SMC Pentax	45~125mm f/4	22	11-14	FA	1.5	5	50.5~20	69×127	612	21.42	67
	● SMC Pentax	85~210mm f/4.5	32	10-11	FA	3.5	12	29~11	67.5×217.5	739	25.87	58
	● SMC Pentax	135~600mm f/6.7	45	12-15	M	6	20	18~4	105×582	4070	142.5	52
<b>Macro</b>	● SMC Pentax Macro	50mm f/4	32	3-4	FA	0.234	0.77	46	63×54	241	8.44	52
	● SMC Pentax Macro	100mm f/4	32	3-5	FA	0.45	1.48	24.5	65×81.5	370	12.95	52
	● SMC Pentax Bellows	100mm f/4	32	3-5	FA/M	—	—	24.5	60×40	186	6.51	52

● --- Open-aperture metering lenses. ● --- Stop-down metering lenses. FA --- Fully-automatic. M --- Manual. BI --- Filters built in.

# THE NEW K SERIES FAMILY OF ACCESSORIES

In addition to offering a complete choice of K series lenses, Pentax also offers more than 200 accessories, all perfectly matched to fit the new K2, the KX, the KM, and the K 1000.

So when you choose a K series camera, you're choosing a lot more than just a camera.

You're choosing a complete photographic system — from adaptors to spot meter — that can grow with you as your needs and abilities grow.

The new Pentax K series: it's the only photographic system you'll ever need.

## FILTERS



• Skylight Filter

	COLOR					BLACK & WHITE						
	Skylight	Cloudy	Morning & Evening	Flash	Flood	UV	Y1	Y2	O2	R2	YG	Polarizing
52mm Standard	•	•	•	•	•	•	•	•	•	•	•	•
52mm SMC	•	•				•	•	•	•	•	•	•
58mm Standard	•					•	•	•				•
58mm SMC	•	•				•	•	•	•	•		•
67mm Standard	•					•	•	•				
67mm SMC	•	•				•	•	•	•	•		
77mm Standard	•					•	•	•				
77mm SMC	•	•				•	•	•	•	•		

## CASES



• Soft eveready case



• Soft eveready case



• Short soft case



• Telephoto lens case front



• Standard lens case



• Soft lens case 80 (dia.) x 180mm



• Kit bag III



• Speed bag



• Soft lens case 80 (dia.) x 200mm

## EXPOSURE



• Spotmeter V

## FOR 6 x 7



• Adaptor K

## PHOTOMICROGRAPHY



• Microscope adaptor K

## FOR SLIDE



• Slide holder 1x. K.

### MISCELLANEOUS



• Lens cap K

• 49mm—52mm adaptor

• Square lens hood

• Film magazine

• Body cap K

• 52mm—49mm adaptor

• Round lens hood

• Lens mount cap K

• Mount adaptor K

### MACROPHOTOGRAPHY



• Slide copier K

• Auto bellows K



• Helicoid extension tube K



• Bellows unit K



• Auto extension tube set K



• Manual extension tube set K

### FLASH



• Aurorobo

### STEREO PHOTOGRAPHY



• 52mm stereo adaptor



• Stereo viewer II

### CANDID PHOTOGRAPHY



• Mirror adaptor

### COPYING

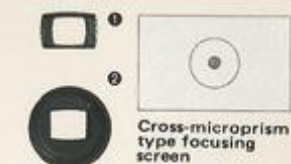


• Micro-moving attachment III



• Copy stand III

• Cable release



• Cross-microprism type focusing screen



• Matte focusing screen



• Photomicrographic type focusing screen



• Correction lens adaptor

• Eyecup II

• Magnifier

• Right-angle finder II



• Close-up lens



• 52mm reverse adaptor K



• Copipod



• Table clamp

• Copy stand III